

STUDENT COURSE FEEDBACK FORM QUESTIONS (EVEN SEM - 2023-24)

Students are required to provide feedback on the faculty and course conduct for each subject under the following three heads

I.ACADEMIC DISCIPLINE AND PUNCTUALITY

1. Declaring lecture schedule / studio program
2. Conducting reviews as per the declared schedule
3. Declaring review assessment marks
4. Coverage of the syllabus and spacing of classes
5. Behaviour and coordination amongst the faculty members in the class

II. TEACHING AND ASSESSMENT

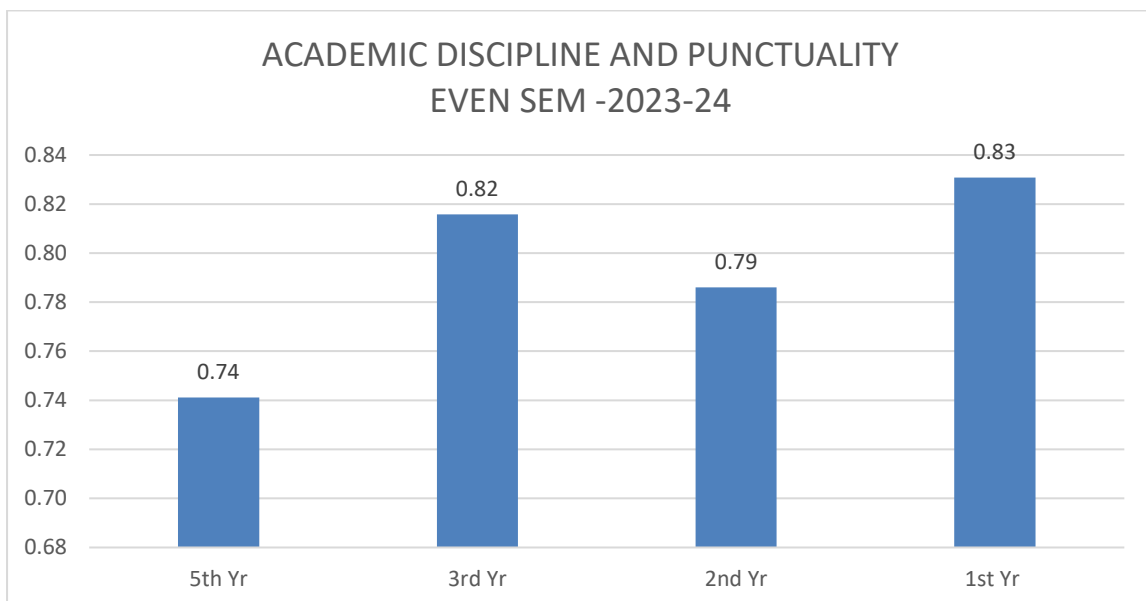
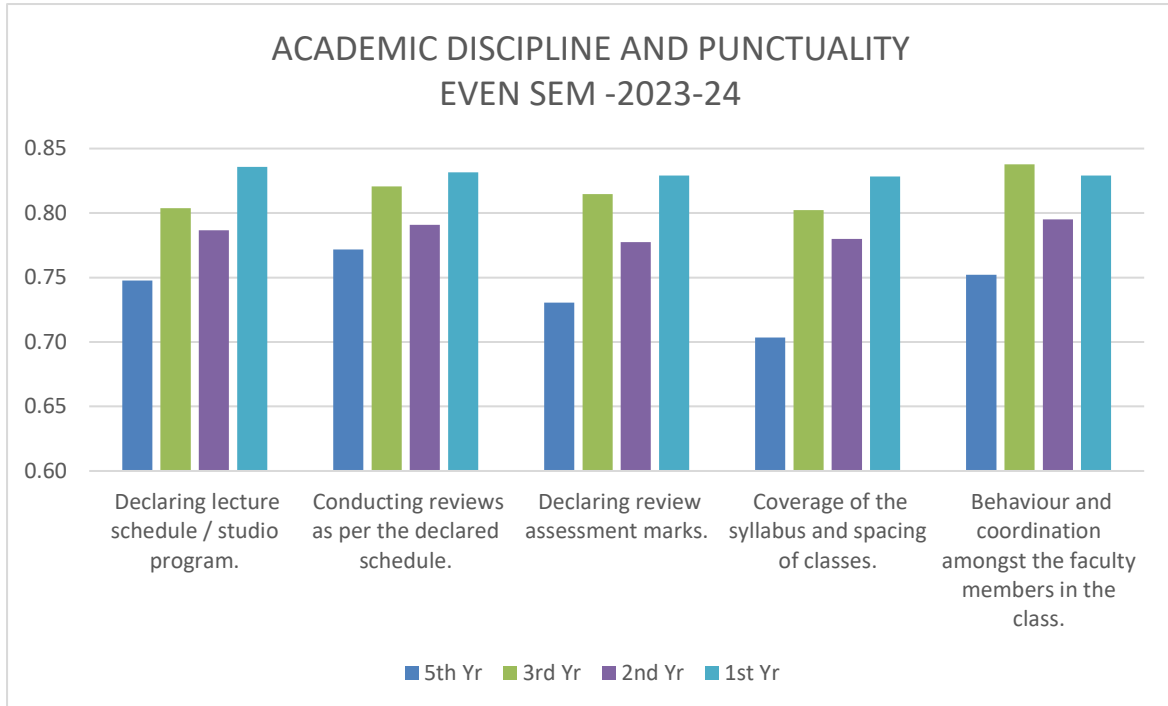
1. Subject Knowledge and method used to conduct classes
2. Encouraging creative thinking and accommodating unconventional approach
3. Transparency in declaring judging criteria and assessment
4. Giving regular feedback on the mistakes made by the student
5. Relevance and quantity of sessional work load given

III.COURSE CURRICULUM

1. Relevance of the course to the Architectural education and to the societal needs
2. Coverage of all basic and recent concepts in the course content
3. Balance between theory and applications in real life situations
4. Course content generates interest in the subject area
5. Focus of the course on skill development to create scope for entrepreneurship and employment

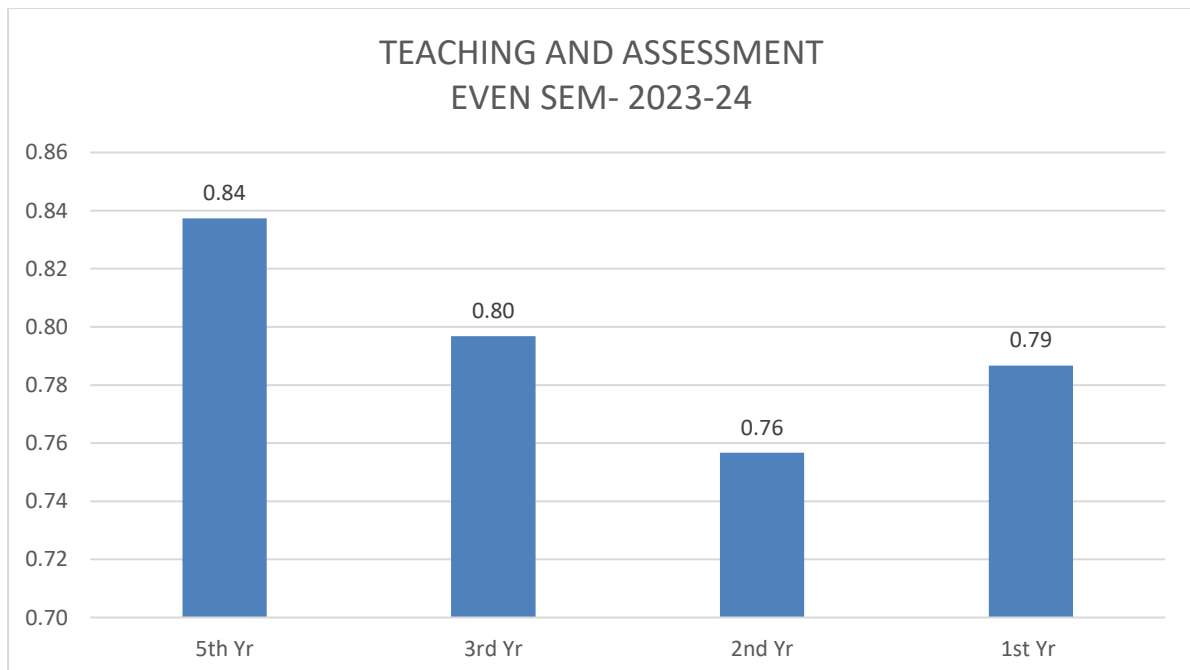
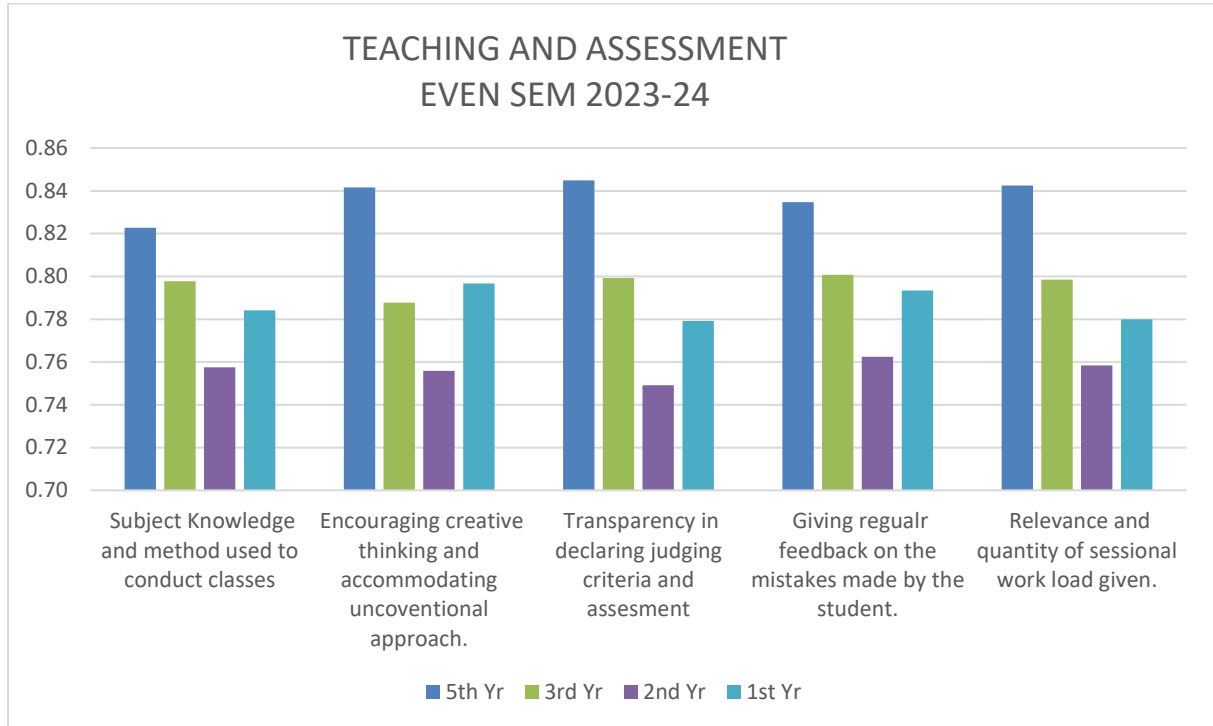
STUDENT COURSE FEEDBACK ANALYSIS (EVEN SEM -SESSION 2023-24)

ACADEMIC DISCIPLINE AND PUNCTUALITY



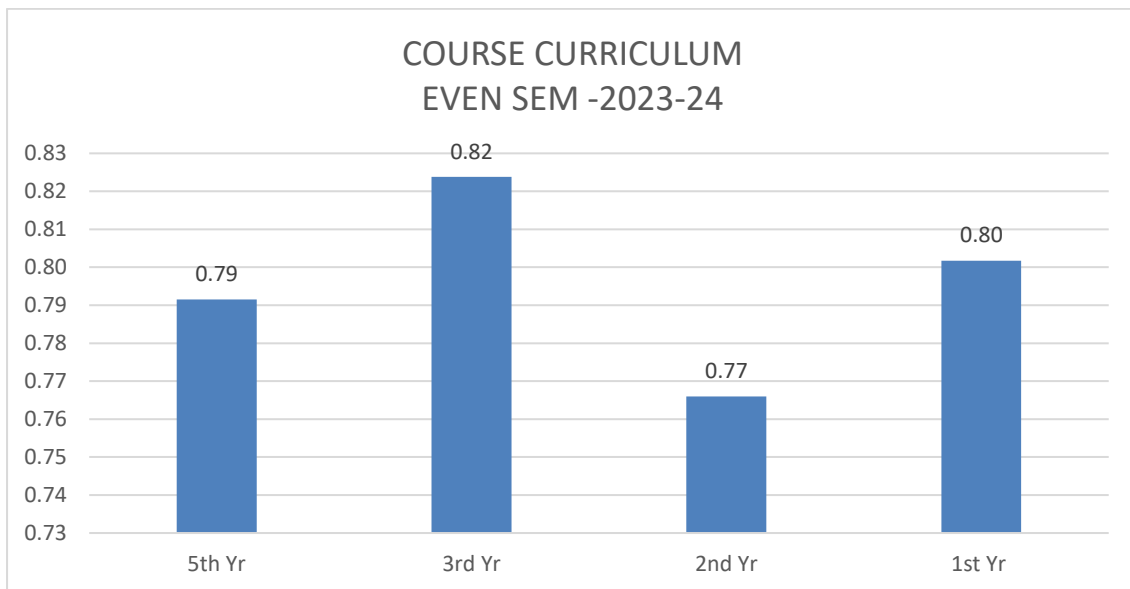
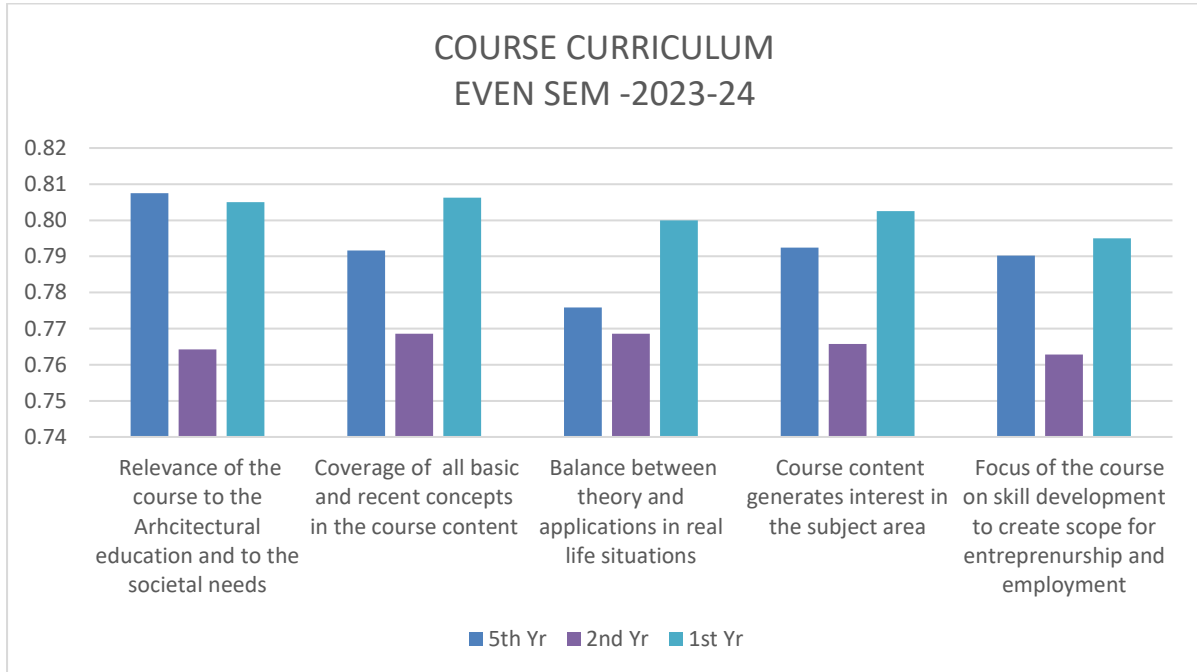
STUDENT COURSE FEEDBACK ANALYSIS (EVEN SEM -SESSION 2023-24)

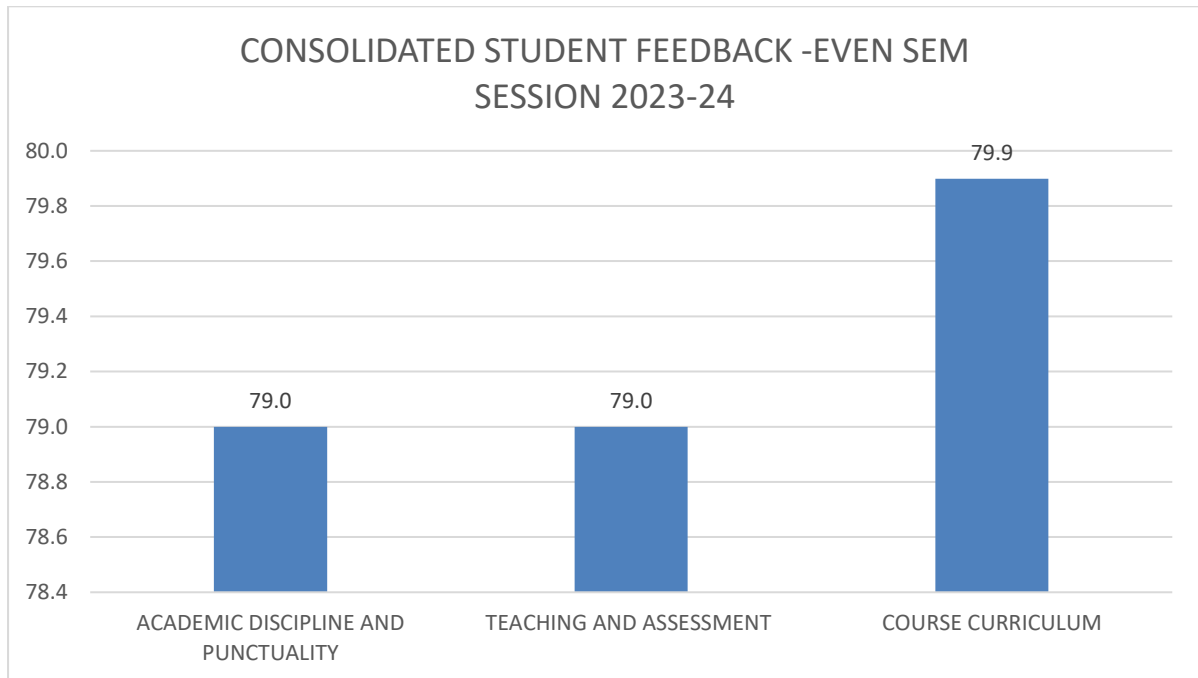
TEACHING AND ASSESSMENT



STUDENT COURSE FEEDBACK ANALYSIS (EVEN SEM -SESSION 2023-24)

COURSE CURRICULUM





AAYOJAN SCHOOL OF ARCHITECTURE, JAIPUR

EXIT SURVEY FORM 2023-24 (FINAL YEAR)

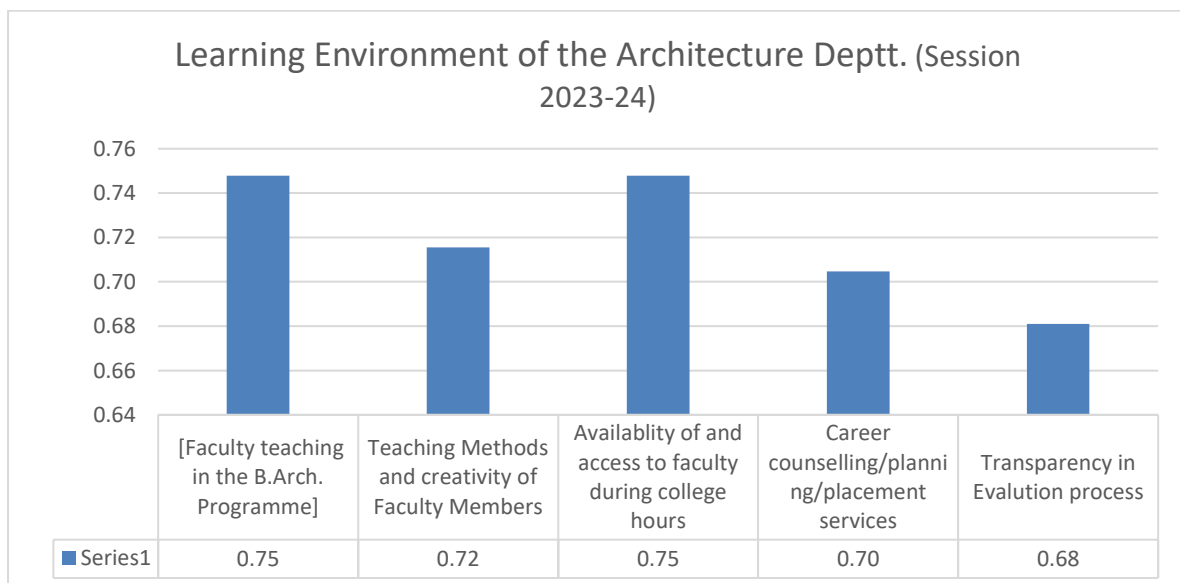
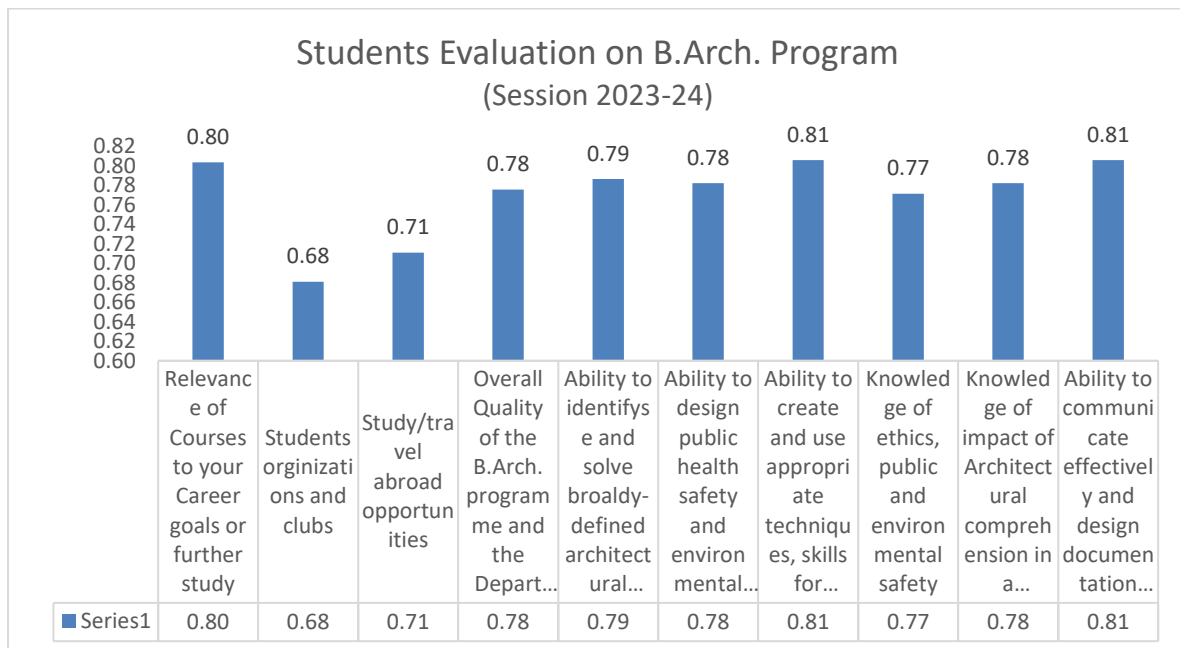
1	Your Evaluation of the B.Arch. Programme	0.77
1.a.	Relevance of Courses to your Career goals or further study	0.80
1.b.	Students' organizations and clubs	0.68
1.c.	Study/travel abroad opportunities	0.71
1.d.	Overall Quality of the B.Arch. programme and the Department	0.78
1.e.	Ability to identify and solve broadly-defined architectural issues	0.79
1.f.	Ability to design public health safety and environmental conscious buildings	0.78
1.g.	Ability to create and use appropriate techniques, skills for contemporary architecture requirements	0.81
1.h.	Knowledge of ethics, public and environmental safety	0.77
1.i.	Knowledge of impact of Architectural comprehension in a societal and global context for sustainable improvement	0.78
1.j.	Ability to communicate effectively and design documentation and presentations	0.81
2	Your Evaluation of learning environment of the department at ASA	0.72
2.a.	[Faculty teaching in the B.Arch. Programme]	0.75
2.b.	Teaching Methods and creativity of Faculty Members	0.72
2.c.	Availability of and access to faculty during college hours	0.75
2.d.	Career counselling/planning/placement services	0.70
2.e.	Transparency in Evaluation process	0.68
3	Your Evaluation of Department of Architecture at ASA	0.68
3.a.	Classroom/Laboratory facilities	0.64
3.b.	Learning and technical resources	0.69
3.c.	Subject oriented Library resources	0.77
3.d.	Facilities and Amenities	0.61
3.e.	[Safety and Security]	0.69

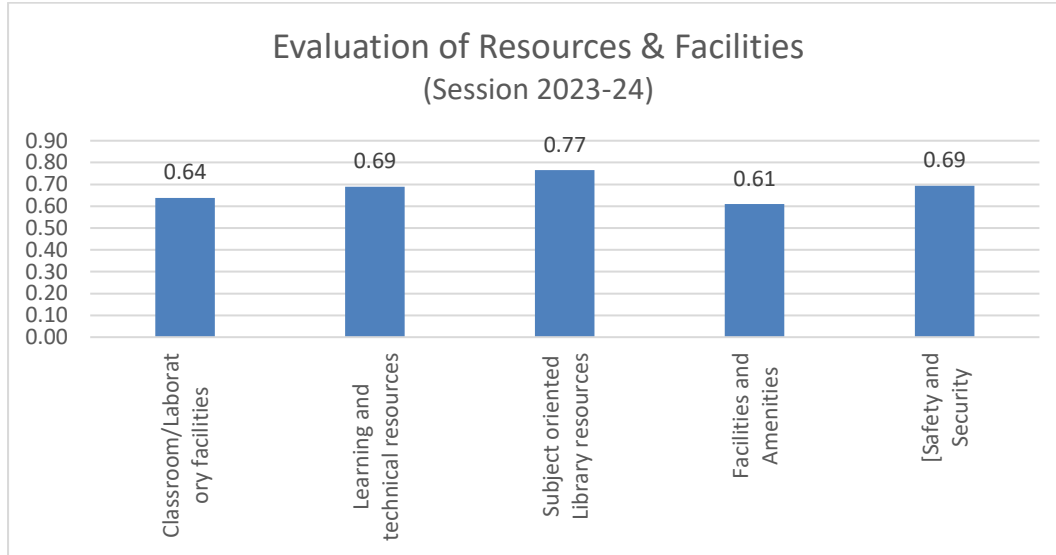
EXIT SURVEY ANALYSIS FOR B. ARCH PROGRAMME 2023-24 (FINAL YEAR)

TOTAL RESPONSES – 118

The exit survey of the passing out batch was conducted for

1. Students' evaluation of the B.Arch. Program
2. Learning Environment at the department of Architecture
3. Evaluation of Resources, Infrastructure facilities, safety and security





OVERALL FEEDBACK OF EXIT STUDENTS OF SESSION 2023-24

